



Precision Beard Trimmer CC-9108

User Manual

Technical Parameter:

Input: DC 5V

Charging Time: 2h

Made in P.R.C.



WARNING:



Keep the appliance dry. Not to be used in bath or shower.

- This appliance is not intended for use by person (including children) with reduced physical, sensory, or mental capabilities, or lack of experience and knowledge, unless they have been given supervision or instruction concerning use of the appliance by a person responsible for their safety.
- Children should be supervised to ensure that they do not play with the appliance.
- To prevent possible harm to the environment or human health from uncontrolled waste disposal, such as the unused batteries and motors. etc. Recycle them responsibly to promote the sustainable reuse of materials resources.
- To return your used device, please use the return and collection systems or contact the retailer where the product was purchased. They can take this product for environmentally safe recycling.

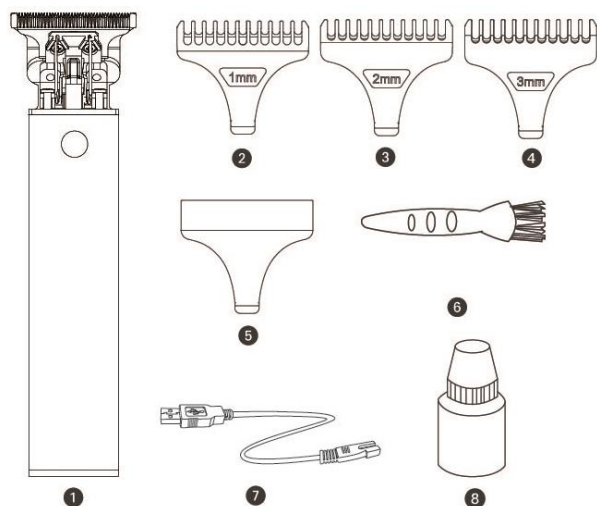
CAUTION:

- Cleaning the housing using only a cloth slightly dampened water or a mild soap solution.
- Never use a caustic solution.
- Never submerge the clipper in water.
- Keep away from the children.
- This clipper may become warm during operating and/or charging, this is normal.
- When using, do not hold the power soft line, to prevent possible harm and to avoid accidents.
- Never tamper with moving parts.
- Be sure to charge one time at least within one year after purchase

CHARGING:

- Charge the appliance fully before you use it for the first time or after a long period of disuse.
- Do not charge if the temperature is lower than 0° or higher than 40°C.
- The standard charging time is 2 hours,
- When it is fully charged, the appliance has a cordless operating time of up to 240 minutes.
- During charging the indicator light shows red.
- Push the switch button to ON, then it can be used.

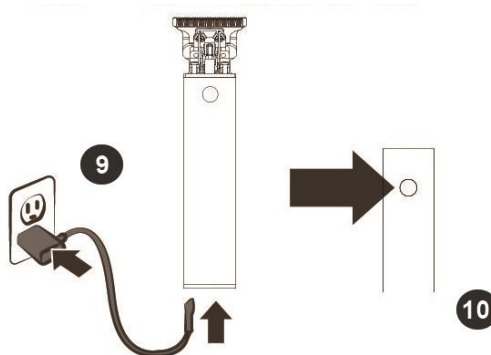
PARTS IDENTIFICATION:



1. Beard Trimmer	5. Protection Cap
2. Comb (1mm)	6. Cleaning Brush
3. Comb (2mm)	7. USB Charger
4. Comb (3mm)	8. Oil Bottle

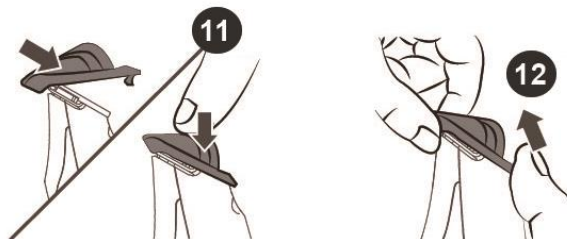
HOW TO USE:

- The clipper operates or corded.
- Put the adaptor connected with the jack of the battery pack which lies at the bottom of the machine, then put the adaptor pins connected with the power.



HOW TO USE THE COMB ATTACHMENT:

1. When load and unload the comb attachment, please ensure the power switch is at OFF position. Attached comb of 1,2 and 3mm combs for different cutting length (Fig. 11).
2. Push the comb button as (Fig. 12) you can change the comb with other size.



MAINTENANCE OF THE BLADES:



*Use the brush, to clean the blades to remove hair which may be caught between the blades.

CLEANING UNDER THE TAP:

Remove the comb and clean it with the brush or rinse it under the tap (Fig 14)



