



UniMed – Torque Percussion Massager

HOT GUN



CC-9112
Instruction Manual

For the convenience of product improvement, the company reserves the right of modification without further notice!

Product Overview

Massage Head

Flat Head	Ball Head	Cylinder head	U-Head
It is suitable for relaxation and shaping of various muscle parts.	Suitable for massaging all muscle parts, such as palms, soles, etc.	It is applicable to impact deep tissues, such as meridian joints, etc.	Apply to massage the neck and Achilles tendon of spina.

Product Parameters

- **Rated Voltage:** 7.4V
- **Rated Current:** 2A
- **Input Parameter:** 5V-2A
- **Maximum Speed:** 3200r/min
- **Battery Capacity:** 1800mAh



Product Use:

On/Off

Hold the start key for three seconds to power on, the display will show "00", press it again to start hot compress.

After powered on, press "+" top start the massage function, "+" for increase the intensity, and "-" for reduce the intensity, hold "+" or "-" for continuous increase or reduce the intensity.



Force Adjustment

- The starting gear is zero.
- Click the "+" or "-" key once to increase or decrease one gear.
- The maximum gear is 32nd gear.

Temperature Adjustment

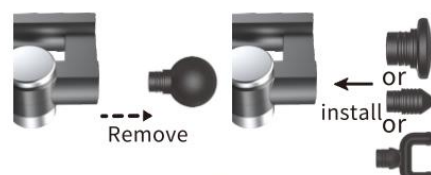
Temperature Adjustment Heat maximum level is 4, press "start key" once to increase one level; 01 level stands for 40°C; 02 level stands for 45°C; 03 level stands for 50°C; 04 level stands for 55°C

Caution:

1. Once heating function is turned on, the heating sheet surface temperature keeps rising. Please compress the device on your body gently and keep moving, not on the same body part for a long time.
2. Please turn off the heating function if you do not use it immediately because the surface temperature cannot be transmitted to the skin, the actual temperature will be higher than the expected control temperature in case of any trauma or scald.

Note: In order to protect the bones and muscles, avoid long-term fixed-point massage, resulting in damage, close to open 15 minutes to automatically stop the intelligent protection mode.

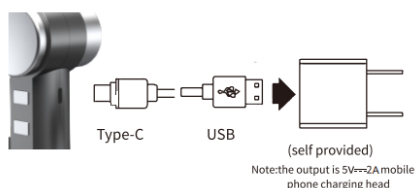
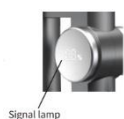
Change Massage Head



installation is complete

Display Signal Light

- The display will show the gear of the fascia gun.
- When charging, the screen shows "1" and keep flickering. When "1" stops flickering, the battery is fully charged.



(self provided)
Note:the output is 5V--2A mobile phone charging head

- Please be sure to fully charge before use first.
- The signal light is flickering when charging, and keep static after charging.
- The charging time is about 4H



Indication

- Pain and spasm due to muscle contusion, sprain and strain.
- To help swelling flow
- Loose and thickened connective tissue and fascia
- Reduce the accumulation of lactic acid in muscle
- Increase joint mobility
- Eliminate muscle fatigue



DO NOT USE

- Aneurysm, bleeding, blood thinners
- Heart disease, with pacemaker or defibrillator
- Pregnancy, cancer
- The device cannot be used within 3 inches of internal fixation within 90 days after internal fixation
- Sensitive area: head, face, cervical vertebrae, spine and vertebral body.
- The position of tibia, dorsum of foot, dorsum of hand, etc. near the skeleton with less muscle coverage.

Detailed List

Host	x1	Type-C charging line	x1	Instructions	x1
Ball head	x1	U-head	x1	Cylinder head	x1
Flat head	x1				



Matters needing attention

- Do not drop or hit the appliance (adapter). If the charger (adapter) case is damaged, please contact the Authorized Service Center for replacement.
- Do not touch the power cord with wet hands or pull out the charger (adapter) by dragging the power cable.
- Do not touch the product or charger (adapter) with wet hands to avoid electric short circuit, failure or shock.
- When the charger is caught in the rain, soaked in liquid or seriously damp, please stop using it and contact the Authorized Service Center for replacement.
- Do not expose the battery to high temperatures or around heating devices such as sunshine, heaters, insert foreign body, or immerse it in water or other liquids, so as to avoid battery leakage, overheating, fire or explosion.
- Remove the battery when discard the appliance.
- Power off the appliance before removing the battery.
- Batteries should be disposed of safely.

Warranty Card

Product Model:

Serial Number:

Purchase Date:

Customer Name:

Customer Tel:

Customer Email:

Warranty Service Terms:

1. The product is warranted for one year and the built-in battery is warranted for six months.
2. The warranty starts from the first purchase date of the product.
3. In case of quality problems requiring warranty, please send this warranty card. The purchase documents and products shall be sent back to the dealer or factory for repair.

The following are not covered by the warranty:

1. Formal purchase certificate and warranty card with detailed information cannot be provided.
2. Damage caused by human or irresistible factors.
3. The artificial dismantling of the fascial gun causes irreversible damage.

*The company reserves the right of final interpretation of the above-mentioned after-sale terms and restrictions

certificate

Inspector code:



Date of manufacture:

--	--	--