



## STEAM MOP

### Instruction manual



CC-9074GRN  
CC-9074BLU  
CC-9074GRE



Dear consumer, Please read these instructions carefully before use in order to avoid damage due to incorrect use and to better understand the functions of this product. Please pay particular attention to the safety guide.

If you pass the device on to a third party, these Operating Instructions must also be handed over.

## IMPORTANT SAFEGUARDS

- Please read these instructions carefully before use.
- Keep present instructions for future references.
- Check that your mains voltage corresponds to that stated on the appliance.
- Only use the appliance for domestic purposes and household or similar applications such as:
  - staff kitchen areas, in shops, offices and other working environments;
  - By clients in hotels, motels and other residential type environments;
  - Environment type like :
    - Farm Houses • Bed and Breakfast.
- Only use the appliance in the way indicated in these instructions.
- Never use this unit near bathtub, shower, wash-hand basins or other containers with water.
- Never use this apparatus near water projections.
- Never use this apparatus with the wet hands.
- If, unfortunately the apparatus is wet, immediately withdraw the cord of the socket-outlet.
- Inform potential users of these instructions.
- Never leave the appliance unsupervised when in use.
- The appliance must be used only for its intended purpose. No responsibility can be taken for any possible damage caused by incorrect use or improper handling.
- Children and persons with disabilities are not always aware of the danger posed by the use of appliances.
- This appliance can be used by persons with reduced physical, sensory or mental capabilities or lack of experience and knowledge if they have been given supervision or instruction concerning use of the appliance in a safe way and if they understand the hazards involved.
- This appliance shall not be used by children.
- This device is not a toy, do not leave children or people with disabilities to play with.
- Cleaning and maintenance must not be made ! ! by children.
- keep the appliance out of reach of children when it is energized or cooling down.
- The appliance shall not be left unattended while it is connected to the

supply mains;

- The appliance is not to be used if it has been dropped, if there are visible signs of damage or if it is leaking;
- The appliance shall be unplugged after use and before carrying out user maintenance on the appliance.
- The liquid or steam must not be directed towards equipment containing electrical components, such as the interior of ovens.
- In order to ensure your children's safety, please keep all packaging (plastic bags, boxes, polystyrene etc.) out of their reach.
- Caution ! Do not allow small children to play with the foil :  
**THERE IS A DANGER OF SUFFOCATION !**
- From time to time check the cord for damages. Never use the appliance if cord or appliance shows any signs of damage.
- Never immerse the appliance in water or any other liquid for any reason whatsoever.
- Never place it into the dishwasher.
- Never use the appliance near hot surfaces.
- Do not operate the appliance with a damaged cord or plug, or after the appliance has been damaged in any manner.
- If the supply cord or appliance is damaged,
- it must be replaced by the manufacturer or its service agent or a similarly qualified person in order to avoid a hazard.
- Disconnect the power source cable before any operation of cleaning of maintenance and accessories assembly.
- Never use the appliance outside and always place it in a dry environment.
- Never use accessories, which are not recommended by the producer. They could constitute a danger to the user and risk to damage the appliance.
- Never use any other connector than the one provided.
- Never move the appliance by pulling the cord. Make sure the cord cannot get caught in any way.
- Never wind the cord around the appliance and do not bend it
- Ensure that the power cord does not come into contact with hot parts of this unit.
- Make sure the appliance has cooled down before cleaning and storing it.

- The temperature of accessible surfaces may be very high when the appliance is operating. Never touch these parts, of apparatus, to avoid burning itself.
- Make sure the appliance never comes into contact with flammable materials, such as curtains, cloth, etc...& the power cord and plug do not come in contact with water.
- Before cleaning, always unplug the appliance from the power supply and let it cool down.
- This appliance is not intended to be operated by means of an external timer or separate remote-control system.
- Always place the unit on a flat surface. Ensure, also, not to cover the device and not to put anything on it.
- Always remove the plug from the wall socket when the appliance is not in use.
- When using an extension lead always make sure that the entire cable is unwound from the reel. Use solely CE approved extension leads. Input power must be at least 16A, 250V, 3000W.
- Incorrect operation and improper use can damage the appliance and cause injury to the user.
- This device, designed for home use, complies with standards relating to this type of product.
- The appliance must be used and rested on a table or flat & stable surface.
- The item must not be left unattended when it is connected to main supply.
- The item is not to be used, if it has been dropped or if there are visible signs of damage or if it is leaking.
- Regarding the instructions for cleaning, thanks to refer to the below paragraph of the manual.
- This appliance is only intended for household use.
- Never direct steam towards people, animals or plants, or equipment containing electrical components such as the interior of ovens.

### **FIRST USE**

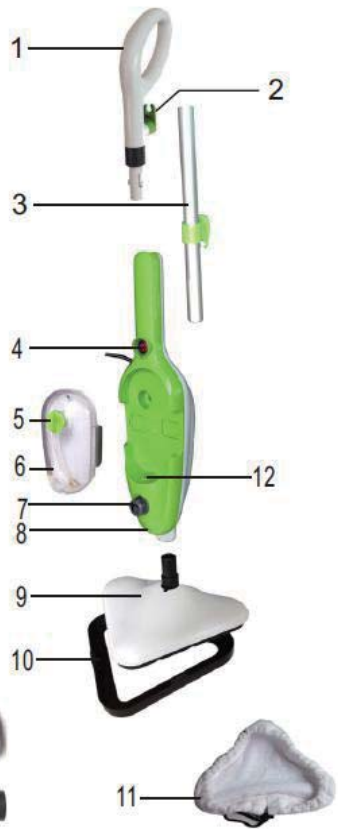
Before first use, remove the device and all accessories and being careful with sharp accessories.

Clean the apparatus according to the instructions in "Cleaning" paragraph. Place the machine on a suitable flat, stable surface.

Ensure that all the parts are correctly assembled before operation.  
 Do not use the steam mop without the floor cloth in place.  
 Do not use it without water in the water tank.  
 Place the appliance on a flat surface when operating to avoid overturning.  
 Do not insert any objects into openings. Do not use with any opening blocked.  
 Do not use any detergents in the water tank for cleaning, only use water.  
 Never direct steam towards people, animals or plants, or equipment containing electrical components such as the interior of ovens.

### TO KNOW ITS UNIT

1. Handle
2. Upper Cord Wrap Hook
3. Metal tube
4. Power Switch
5. Water Tank Cap
6. Water Tank
7. Steam adjustment knob
8. Main Body
9. Mop Head
10. Glider
11. Cloth Sleeve
12. Pilot light
13. Ironing brush
14. Flat brush
15. Angle nozzle
16. Window Cleaning Toll
17. Round Brush
18. Adaptor
19. Small cloth
20. Large round brush
21. Scraping tool

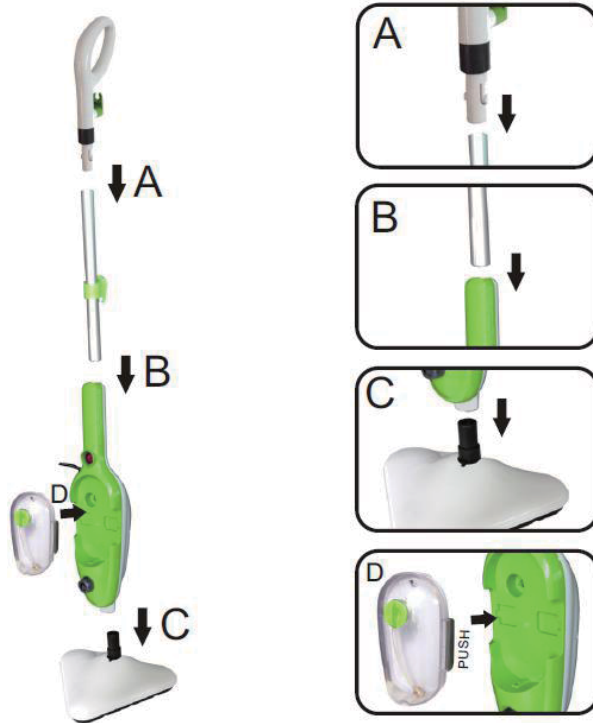


1.

## ASSEMBLING THE STEAM MOP

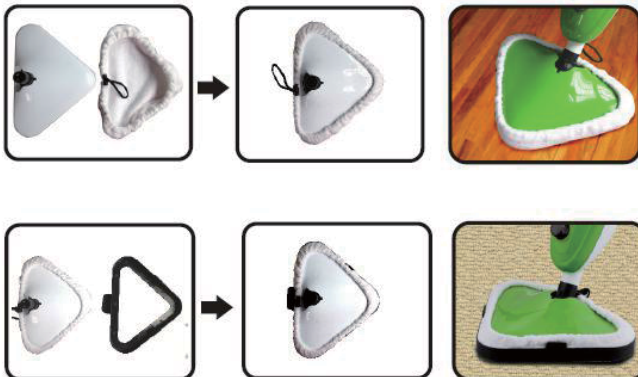
Before assembling the steam mop, make sure the power switch is in “OFF” position

Connect the parts as shown below:



5

Fit the cloth sleeve over the mop head as shown below:



6

Fill with water:

Push on the two button on each side of the tank. Tank will get out,

Open the tank cap & fill with water,

Close the water tank with the cap and put the tank back into the body.



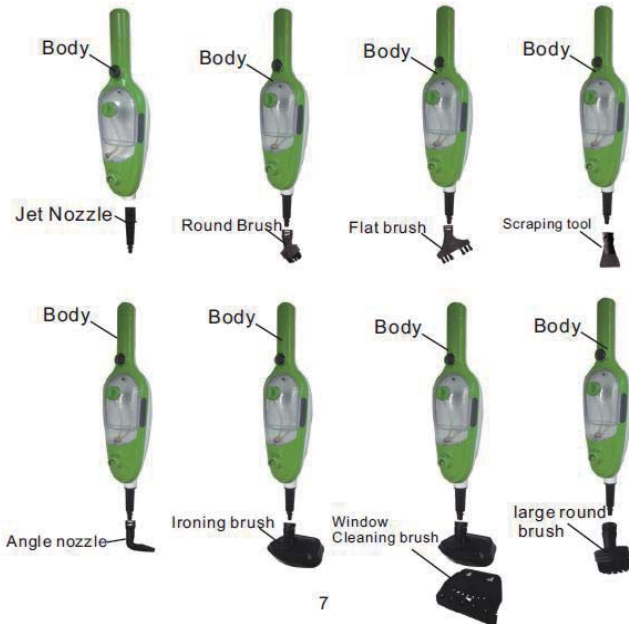
### TO USE AS A HAND STEAM CLEANER

1. Press handle tube button to remove the handle from main body.






2. Install the accessory adaptor on the main body, until it is into place.

3. Choose the appropriate accessories (check accessories use list), according to arrow indicator to align and implant to accessory adaptor, then turn anticlockwise, until it into place.

NOTE : to remove accessory adaptor, Press salient point on the accessory adaptor.



## ACCESSORY LIST

Accessory	Picture	Suggested use
Two pads		For general cleaning of hard floors/marbles refreshing carpets
Carpet glider		For cleaning carpet use
Accessory adaptor		Sink .gas stove. faucet .grout. Microwaves. oven. rang hood. Hard to reach areas. etc
Angle nozzle		Sink .gas stove. faucet . grout. Edge or corner. etc
Round brush		Oven. microwaves. showers. bathtubs. Faucet fixtures. tile. grout.toys. refrigerators. etc
Flat brush		Cleaning all grout lines sanded or non-sanded areas
Ironing brush		Cleaning shower glass. doors. Mirrors glass. removing scap scum and grime. garment. etc
Window Cleaning Tool		Cleaning shower glass. doors. Mirrors glass. etc
Small cloth		Garment cleaning or soft surface cleaning etc
Scraping tool		Scraping baked on food. grins and grease. removing residue or other difficult substances from surfaces such as stove tops and ovens
large round brush		Oven. microwaves. showers. bathtubs. Faucet fixtures. tile. grout. toys. Refrigerators. etc



## USING THE STEAM MOP

The easy, environmentally friendly way to clean your floors.

### **No chemicals**

Thoroughly cleans and sanitises floor surfaces without any chemicals.

### **No elbow grease**

Easily removes dirt and grime from hard floors or carpets, leaving them hygienically clean without the need for hard physical labour.

### **Tap water only**

Designed for use with plain tap water that is converted into steam. (Distilled or purified water is recommended for use, ONLY in hard water areas.)

### **Reusable cloths**

Comes with two reusable, highly absorbent microfiber cloths that can be machine-washed in hot water and tumble dried.

### **Use on most hard floors**

Designed for use on hard surfaces that will withstand high heat, including ceramic tiles, marble, stone or linoleum floors and on sealed hardwood or parquetry floor (However, see cautions below).

### **Use on carpet and rugs**

Designed for use with the supplied carpet glider on carpet and rugs that will withstand high heat.

Do not use the steam mop on unsealed wood floors.

Do not let the steam mop stand on any wood floor for an extended period of time.

Note : This could cause the wood grain to expand.

Test an isolated area of the surface to be cleaned before proceeding.

Take extra care when using the steam mop on surfaces that have been treated with wax, as the heat and steam may remove the wax or the sheen.

Take extra care when using the steam mop on vinyl, linoleum or any other heat-sensitive floors, as too much heat can melt the glue on the floor.

We recommend cleaning a small sample first in an inconspicuous area of the floor and checking the floor manufacturer's use and care instructions for the surface to ensure suitability for steam cleaning.

### **WARNING**

**Never run the steam mop without water.  
Never direct steam at any person or animal.**

Before you start steam cleaning your floors, make sure:

1. The surfaces to be steam cleaned have been swept or vacuumed.
2. The steam mop is fully assembled (see Assembling paragraph).
3. The microfiber cloth sits tightly around the steam head.  
(Do not use the mop without the microfiber cloth!)
4. The water tank is filled.  
(Do not add cleaning solution, only use tap water, or distilled/purified water.)

## USE

- Unroll the power cord completely.
- Check that the tension in force in the country where you are corresponds to that indicated on the apparatus.
- Connect the apparatus in a correct socket-outlet, (and connected to the ground if the unit is Class I), to avoid any danger.
- Disconnect the power source cable before any operation of cleaning of maintenance and accessories assembly.
- Never modify the appliance in anyway.

Turn on the power switch, power indicator Light, the unit starts heating.

NOTE : It takes approximately 30 seconds for the unit to heat up and the steam to be ready.

Push the unit along the floor, Forward and backward.

When the water level in the water tank is low, Turn off the power switch immediately.

Unplug the unit from the electrical outlet and refill the water tank following the Instructions.

NOTE : If you use steam mop for a long time, the cloth sleeve may become very wet or dirty & will need to be replaced.

Turn off the unit & allow to cool before replacing.

NOTE : While replacing cloth sleeve don't touch steam head to avoid scalding.

To sanitize a specific area of your floor, position the steam mop over the area for a minimum of 8 seconds, but no longer than 15 seconds.

NOTE : The steam temperature will reach approximately 90-110°C. This is particularly useful for cleaning bathroom, shower, pet sleeping area or around garbage bins.

## **CLEANING AND MAINTENANCE**

Before cleaning, Always : switch off the appliance, disconnect the apparatus and let it cool.

Clean the outside of the apparatus with a sponge or slightly wet linen.

The parts (removable) can be washed in hot water with sponge and soft detergent.

Never plunge the apparatus in water or all other liquid !

Do not use abrasive cleaners, gritting, or metal brush or another cutting object.

## **STORAGE**

-Ensure the unit is completely cool and dry.

-Do not wrap the cord around the appliance, as this will cause damage.

-Keep the appliance in a cool, dry place and out of reach from children.

## **GUARANTEE**

Before being delivered, all our products are subjected to a rigorous control.

This apparatus is guaranteed 24 months starting from the date of purchase by the consumer.

The documents in proof of guarantee are :

- The invoice and

- The filled and stamped warrantee plate (located on side or bottom of the gift box). Without these documents in proof, no free replacement, nor no free repair, can be carried out.

During the warranty period, we deal for free, the defects of the apparatus or the accessories, rising from a defect of materials or manufacture by repair or, replacement. The services within the framework of the guarantee do not involve any extension of the warranty period and does not give right to a new guarantee !

In the event of recourse to the guarantee, bring back the complete apparatus to your retailer, in its original packing, accompanied by the proofs of purchase.

The breakage of parts out of glass or plastic is, in all the cases, not warranted.

Defects on the accessories or the wearing parts (for example: coals of engines, hooks, drive belts, remote control of replacement, teeth brushes of replacement, webs etc) as well as cleaning, maintenance or it replacement of wearing parts are not guaranteed and are thus to pay !

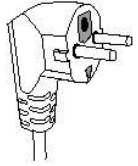
In the event of foreign intervention, the guarantee becomes null and void.

After flow of the warranty period, repairs can be carried out, against payment, by a specialized trade or a repair service.

This unit is equipped with an electrical outlet with earth and must be earthed in an according plug.

Note : In the event of question concerning the earth or electric connection, please consult a qualified personnel.

In the event of short-circuit, earthing reduces the risk of electric shock while making possible the current to be evacuated by the wire of ground.



**CAUTION:** In order to minimize the risks of electric shock, In the event of breakdown, not to open the case but to call upon a qualified technician for repairs.

This device complies with EC directives, it was controlled according to all current European directives, applicable such as: electromagnetic compatibility (EMC) and low voltage (LVD).

This device has been designed and manufactured in compliance with the latest regulations and technical requirements for safety.

### **SPECIFICATIONS**

Power supply	220-240V~ 50/60Hz
Power	1300W
Norm	Class I ; IPX4